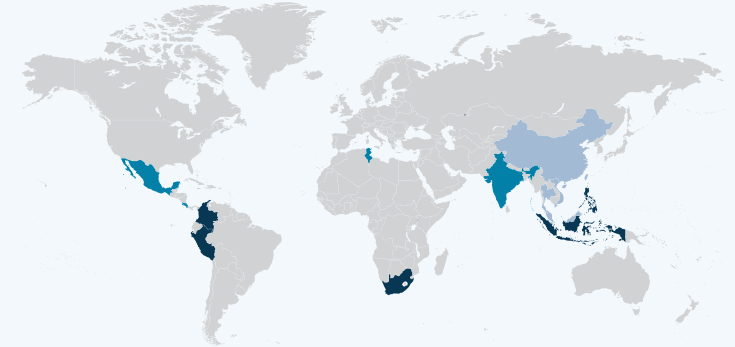


What you can find on the
www.transport-namas.org website



- **Transport NAMA Database** – The Transport NAMA Database is an interactive wiki-based portal that provides access to transport NAMAs. The database is the first resource to present information about transport NAMAs in an easily accessible way. Check out our NAMA database: <http://www.transport-namadatabase.org/>
- **Handbook “Navigating Transport NAMAs”** – Gives practical advice on how to develop and implement a mitigation action in the transport sector
- **Toolbox** – An add-on to the Handbook „Navigating Transport NAMAs“. It aims to provide a hands-on assistance to every practitioner who is using the handbook to design a Transport NAMA
- **International Expert Groups** – TRANSfer established two work-streams: an Expert Group on Measuring, Reporting and Verification (MRV) an Expert Group on Climate Finance for Sustainable Transport
- **TRANSfer News** – TRANSfer News informs about current projects, upcoming events as well as publications
- **Interactive World Map** – Navigating through an interactive map of countries working on Transport and Climate
- **Expert Workshops and Trainings** – Get an overview on expert workshops and trainings, read reviews and find information on workshop reports and summaries



Fotocredits: Indonesia, Colombia, Philippines, Peru, South Africa (SUTP Flickr)

Contact
André Eckermann
E transfer@giz.de
I www.transport-namas.org

TRANSfer Project Towards Climate-Friendly Transport Technologies and Measures

Deutsche Gesellschaft für
Internationale Zusammenarbeit (GIZ) GmbH

Sitz der Gesellschaft
Bonn und Eschborn

Dag-Hammarskjöld-Weg 1-5
65760 Eschborn
Telefon: +49 61 96 79-2636
Telefax: +49 61 96 79-802636

E-Mail: transport@giz.de
Internet: www.giz.de/transport



On behalf of:

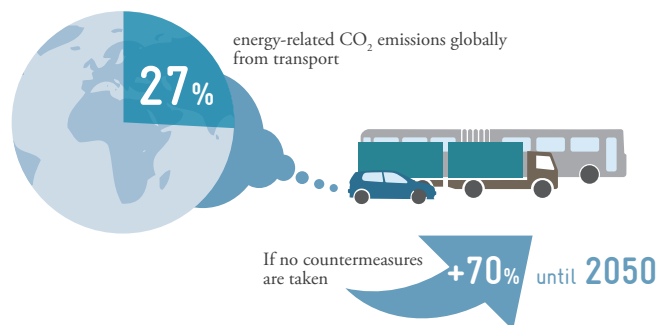


Federal Ministry
for the Environment, Nature Conservation,
Building and Nuclear Safety

of the Federal Republic of Germany

Increasing Challenges

The tremendous growth of motorised transport is challenging sustainable development worldwide. With 27%, the transport sector already contributes the second highest share of energy-related CO₂ emissions globally and is the fastest growing sector in terms of greenhouse gas (GHG) emissions. Improving sustainable mobility is also essential to achieve the Millennium Development Goals (MDGs) and their successors, the upcoming Sustainable Development Goals (SDGs).



Nationally Appropriate Mitigation Actions (NAMAs) offer new opportunities for developing countries in mitigating greenhouse gas emissions in their transport sectors.

What we do

- We support the design and development of transport NAMAs.
- We foster the development of MRV concepts as part of national MRV systems.
- We support the financial design of NAMAs and fundraising for their implementation.
- We provide technical assistance for the implementation of transport NAMAs.
- We promote the international learning process on transport NAMAs in the climate change and transport communities.

Partner Countries – Individual solutions with potential for upscaling

Indonesia

The sustainable urban transport NAMA (SUTRI NAMA) in Indonesia is designed as a national programme by the Indonesian Ministry of Transport, supported by GIZ, that supports in its first phase sustainable urban transport in 7 pilot cities. Improving the urban transport situation in Indonesia's cities will not only reduce greenhouse gas emissions, but will also contribute to better air quality, economic development and social welfare. The Sustainable Urban Transport NAMA in Indonesia is one of the first projects selected by the British-German NAMA Facility.

Colombia

Transport related GHG emissions in Colombia result to 40% from road freight transport. Colombia is developing a NAMA that aims to improve the road freight sector. Using a mix of regulatory and economic incentives, the Government of Colombia strives to accelerate the improvement of the freight sector with the aim to improve economic competitiveness and environmental performance of the freight transport sector. In addition to the freight NAMA, TRANSfer started to support the development of a national urban mobility policy, including non-motorised transport measures with the perspective to design a NAMA in this area.

Peru

In January 2014, the TRANSfer project initiated the cooperation with the Peruvian government. Transport accounts for 38% of energy-related GHG emissions in Peru, which rose by 50% in slightly more than 10 years. While focusing on sustainable urban transport, the Peruvian NAMA proposal consists of a comprehensive set of mitigation measures: improved integration of transport modes in a first step in Lima/Callao, serving in a second step as a showcase for medium sized cities, modernization of the vehicle fleet used for public and motorized individual transport, all accompanied by several activities to strengthen the overall institutional set-up.

Philippines

In the Philippines public transport is dominating the transport sector significantly. Around 70% of all person trips are served by public transport. In general, around 34% of all energy-related GHG emissions in the Philippines are produced by the transport sector. The Philippine Government is promoting the improvement of the integration of public transport planning and operation as well as the shift to low-emission public transport vehicles. TRANSfer supports both approaches in order to mitigate GHG emissions.



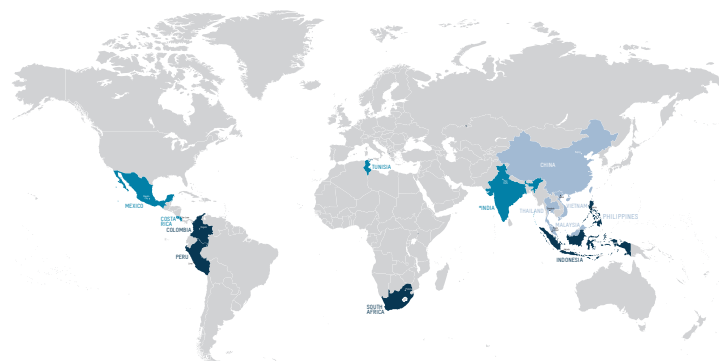
Jakarta, Indonesia



Bogotá, Colombia



Johannesburg, South Africa



- TRANSfer Partner Countries: Indonesia, Peru, Colombia, South Africa
- t-NAMA Countries (IKI): Mexico, Tunisia, *India (UNEP), Costa Rica
- GIZ Climate & Transport Countries: Thailand, Vietnam, Philippines, Malaysia, (Indonesia)

South Africa

South Africa is promoting a modal shift towards public transport and non-motorised modes, as well as setting a framework for energy efficiency in transport. Within the NAMA identification process the 'Passenger Modal Shift from Road to Rail – The Gautrain Case' has been chosen to be developed as NAMA for recognition. The Gautrain is an existing rapid rail network of around 80 km extension carrying around 42,000 passengers per day with expected increasing numbers of passengers in the coming years. TRANSfer supports especially the approach to measure, report and verify emissions reductions and co-benefits. In a second initiative TRANSfer is promoting the development of a CNG-NAMA. This includes the support of a conversion project in the minibus-sector as well as the improvement of the policy framework for natural gas in the transport sector in order to reduce GHG emissions from vehicles.



Manila, Philippines



Lima, Peru

Project Approach

The TRANSfer project is run by GIZ and funded by the International Climate Initiative of the German Ministry for the Environment, Nature Conservation, Building and Nuclear Safety (BMUB). Its objective is to support developing countries to develop and implement climate change mitigation strategies in the transport sector as NAMAs. The project follows a multi-level approach:

- At country level, TRANSfer supports selected partner countries in developing and implementing NAMAs in the transport sector. The NAMAs supported by the project cover a broad variety of approaches in the partner countries Indonesia, the Philippines, South Africa, Peru and Colombia.
- At international level and closely linked to the UNFCCC process, the project helps accelerate the learning process on transport NAMAs with a comprehensive set of measures (events, trainings, facilitation of expert groups, documents with guidance and lessons learned such as the transport NAMA handbook and a database).

Project objective: Developing and emerging countries increasingly contribute to international climate mitigation goals through NAMAs in the transport sector.

